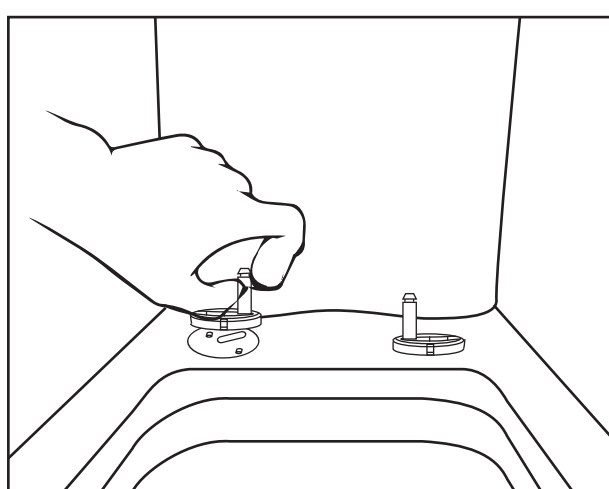
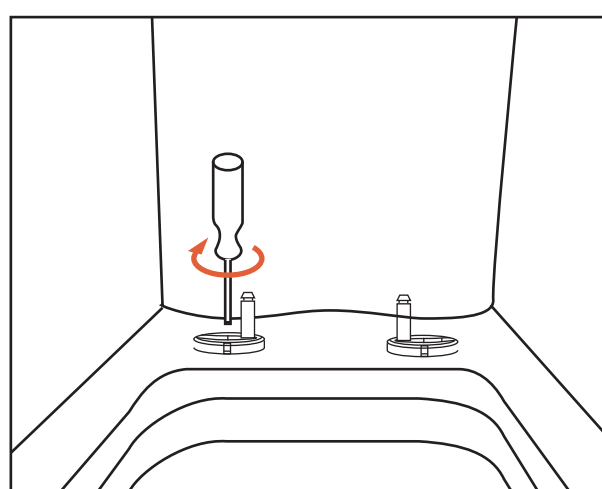


1

2



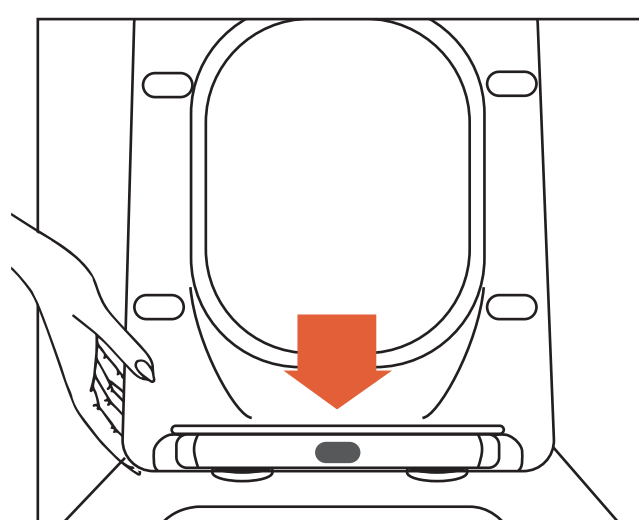
1. Insert the screw on the hinge base into the holes on the pan.



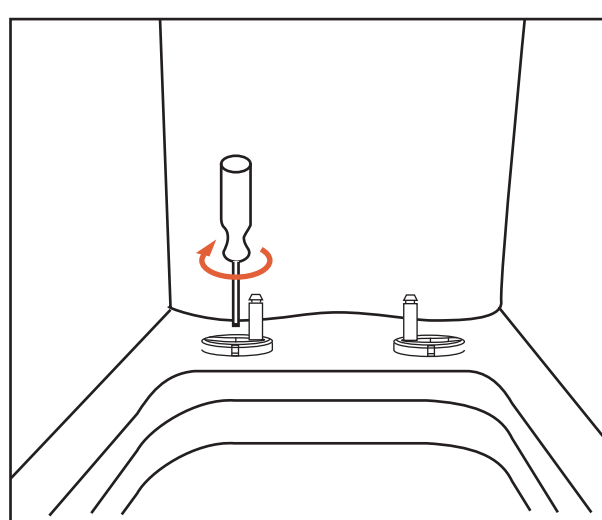
2. Tighten the setscrew but not to the end in order to adjust the seat cover properly.

3

4



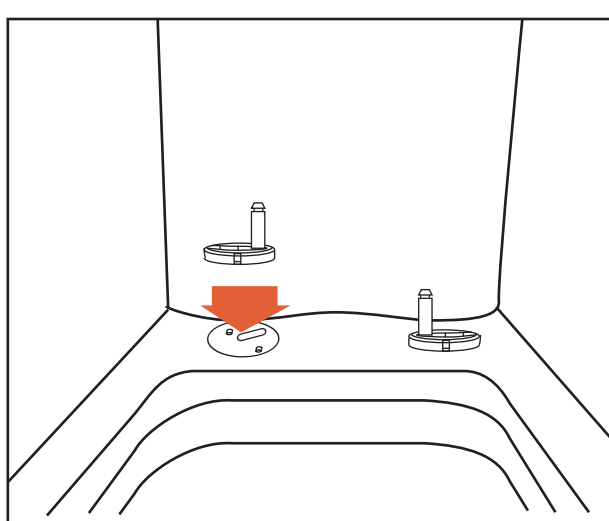
3. Aim at the holes and adjust the hinge base to make the seat cover and pan match.



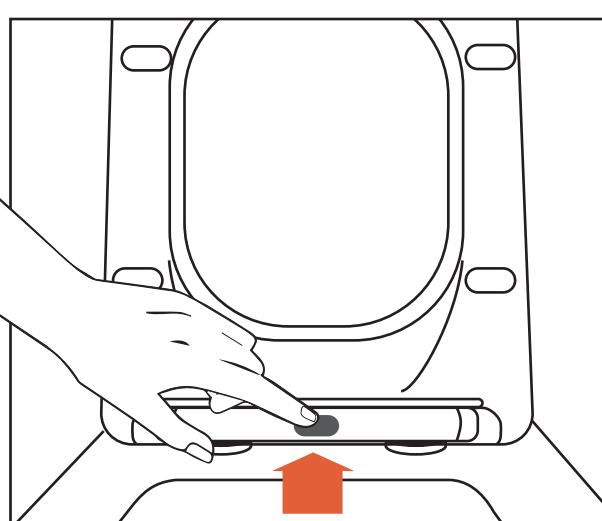
4. Lock the support completely on the ceramics and cover with stainless steel cover.

5

6



5. Put the cap into the hinge base. Fix the seat cover into the hinge base. Finish.



6. Press the button down and pull up to easily remove the cover plate for convenience. Clean.