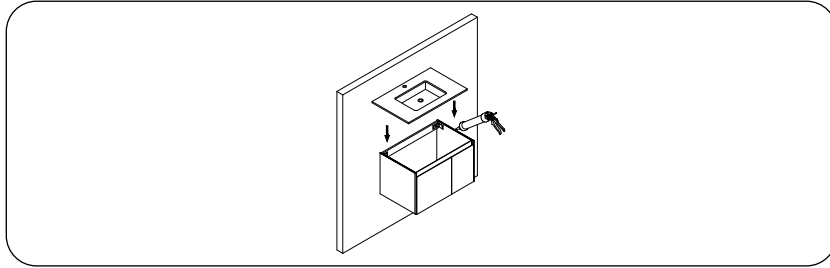


## 4. INSTALLATION STEPS (COUNTERTOP)

### COUNTERTOP INSTALLATION STEP:

To fix the countertop:

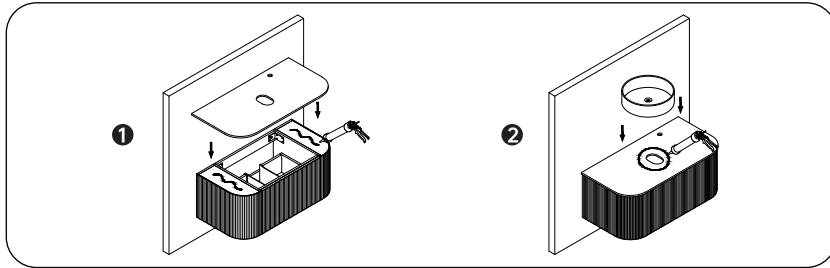
Put appropriate amount of glass glue around the top of the main cabinet. Then put the countertop into the main cabinet in a symmetrical way.



### COUNTERTOP INSTALLATION STEP:

To fix the countertop:

1. Put appropriate amount of glass glue around the top of the main cabinet. Then put the countertop into the main cabinet in a symmetrical way.
2. Put appropriate amount of glass glue on the top of the countertop. Then put the basin on the counter.



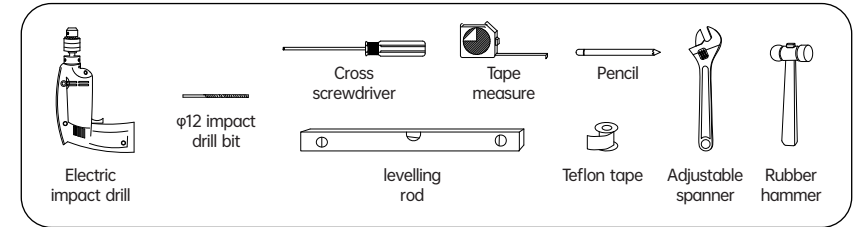
# INSTALLATION MANUAL

## 1. INSTALLATION PREPERATION

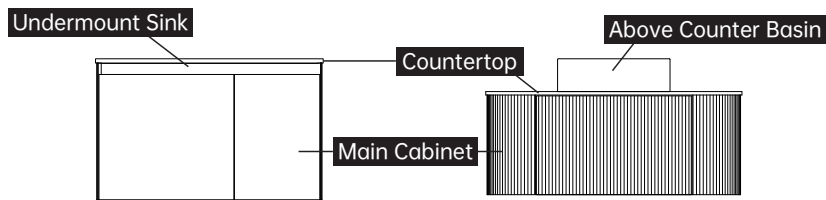
**A** After unpacking, please read this manual carefully, check the components and parts, check whether there is any transportation damage. If there is any problem, please contact the local dealer or our company in time, you will get a satisfactory answer!




**B** Before drilling holes in the wall, it is necessary to verify whether there are hidden objects such as wires and water pipes in the wall to avoid accidental damage.

**C** Common installation tools: electric impact drill,  $\phi 12$  impact drill bit, Cross hand drill, cross screwdriver, levelling rod, pencil, rubber hammer, tape measure, adjustable spanner, teflon tape.



2. PRODUCT OVERALL



No.	Accessory Name	Picture
1	Plastic particle (M12)	
2	Stainless steel countersunk head tapping screws	
3	Foam pad	

3. INSTALLTION STEPS (MAIN CABINET)

MAIN CABINET INSTALLATION STEP:

To fix the main cabinet against the wall: mark the wall hanging holes position on the wall, drill  $\phi 12$  hole according to the number of holes in the back brace of main cabinet, put in the M12 plastic particles, and tighten the main cabinet on the wall with head tapping screws (8\*85).

