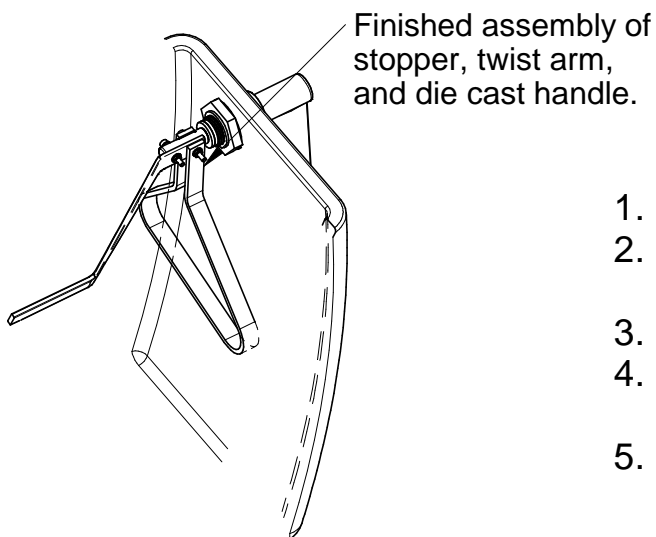
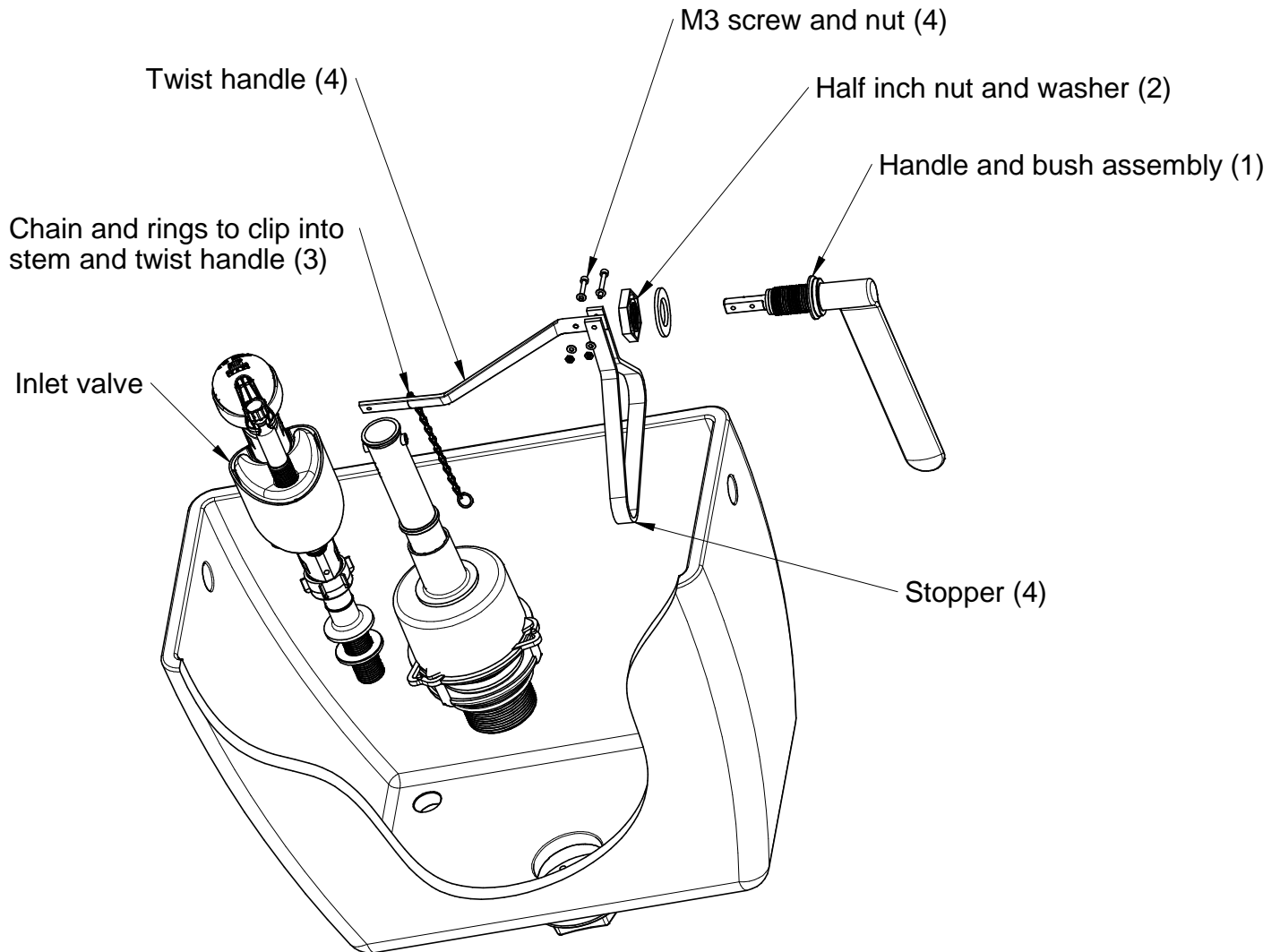


## Paraplegic Die Cast Handle Assembly Instructions



1. Handle and bush assembly.
2. Secure handle and bush into place with washer and nut.
3. Connect chain and ring to twist handle.
4. Use M3 screws to attach stopper and twisted lift handle to die cast handle.
5. Make sure to adjust chain to give it a small amount of play.



**Dutton Plastics**  
ENGINEERING

Telephone : 27 11 617 5000 Branches  
Fax General: 27 11 864 1585 Cape Town: 27 21 712 5454  
Fax sales: 27 11 864 2677 Durban: 27 31 701 2816  
Fax Accounts: 27 11 864 6993 Website: [www.duttonplastics.com](http://www.duttonplastics.com)  
Fax Works: 27 11 864 3202

Reg. No.1947/025245/07

14 Dienst Street ,Alrode Ext 2, Alberton  
PO Box 145092, Bracken Gardens ,1452  
Republic of South Africa

Guaranteed when installed by a  
qualified plumber